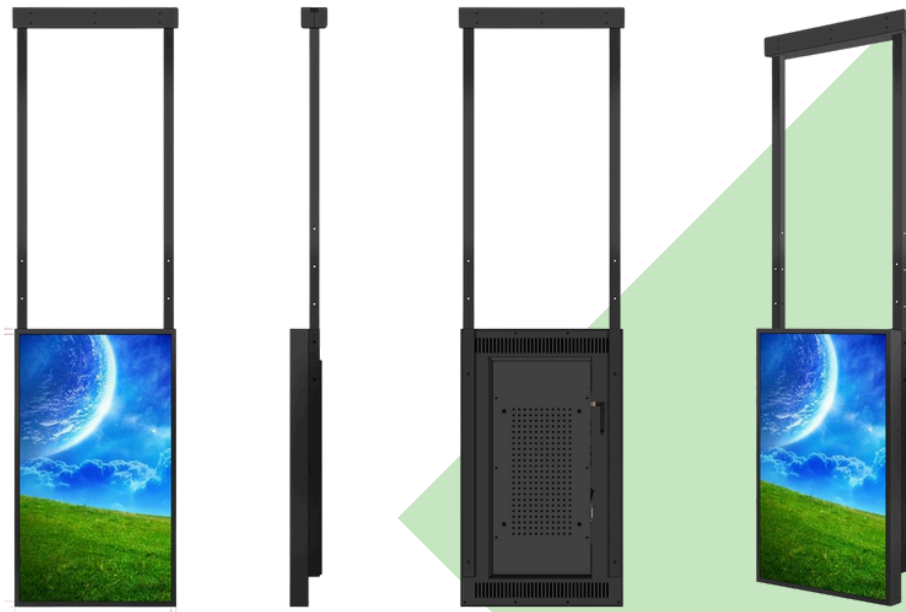
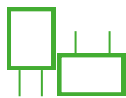




43" Indoor High Brightness Display (BT-43AD8)



Ultra-High
Brightness



Flexible
Mounting
Options



24/7
Performance



Heat and
Sunlight
Resistance



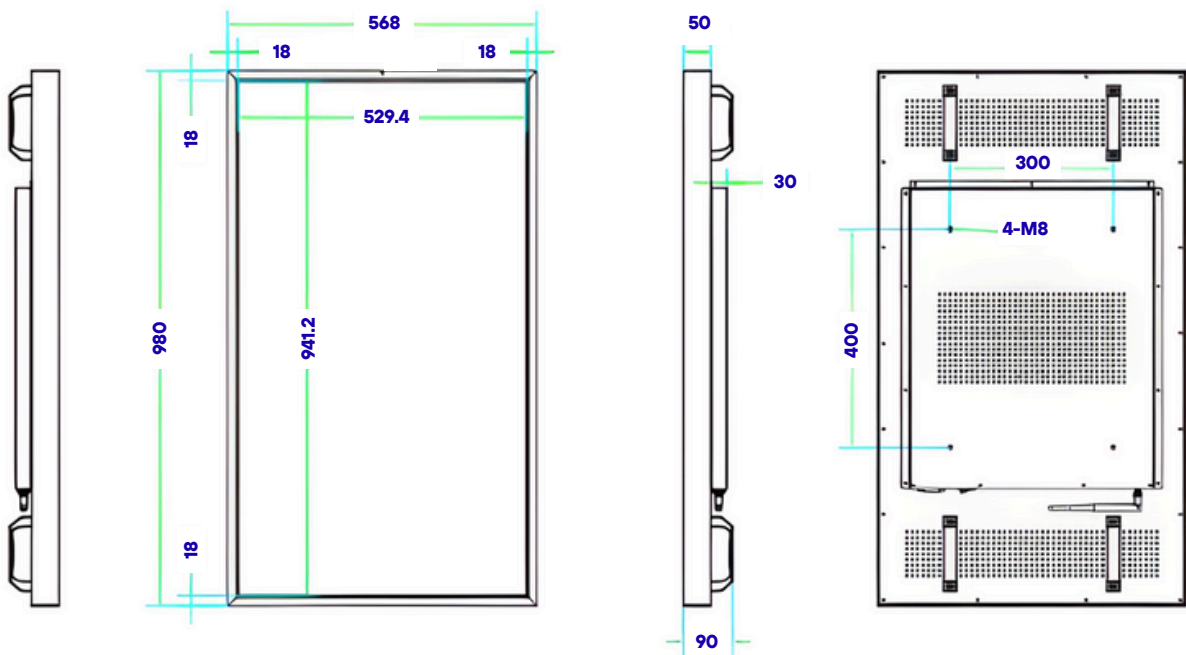
Eco-Friendly
Power Timer



IPS Panel
Technology

Product Dimensions

Product Dimensions:



Product Weight: 19kg

Full Specifications

Connectivity	
Audio Output	8 Ω, 5 W
External Control	<ul style="list-style-type: none"> o 4 × UART o 1 × DEBUG o 1 × MCU programming serial port o Ethernet (Gigabit) o Supports dual-band Wi-Fi (2.4 GHz / 5 GHz), Wi-Fi 6 (IEEE 802.11 a/b/g/n/ac/ax compliant)
Display Specifications	
Diagonal Size	43"
Aspect Ratio	16:9
Panel Resolution	1920 × 1080p
Brightness	3000 cd/m ²
Display Colours	16.7M
Contrast Ratio	1200:1
Viewing Angle (H/V)	178° / 178°
Surface Treatment	Matte (Haze 1%), Hard Coating (3H)
Operating System	
Pre-installed OS	Android 11
User Convenience	
Installation Options	Landscape or portrait orientation (supports 24/7 operation)
Energy-Saving Features	· Ambient light sensor, automatic brightness adjustment, intelligent power-saving technology
Bracket	(Optional) Floor or ceiling mount
Audio	
Built-in Speakers	2 × 8 Ω, 5 W
Power	
Power Supply	Supports wide voltage range 100–240 V
Power Consumption Standby/Typical	<0.75 W/ 220 W
Compliance	Meets UL60950-1 international safety standard, CE,FC,RoHS Compliant
Operating Environment	
Operating Temperature Range	0 ~ 50°C
Mean Time Between Failures (MTBF)	50,000 hours



Multimedia Application Support	
Video Format/Playback	Supports H.265, H.264, VP8, MAV, WMV, AVS, H.263, MPEG-4, and other formats
Audio Format/Playback	MP3, WMA, WAV, APE, FLAC, AAC, OGG, M4A, 3GPP, and others
Image Playback Formats	Supports JPG, BMP, PNG, and other image formats
Built-in Hardware	
Processor	RK3568, quad-core, up to 2.0 GHz, Android 11
Memory	4 GB
Storage	32 GB
Accessories	
Power cord	(as specified)
Remote Control	(without batteries)
Other Information	
On-screen Menu Languages	English, French, German, Italian, Polish, Turkish, Russian, Simplified Chinese, Spanish, Traditional Chinese, Arabic, Japanese
Warranty	3-year warranty
Certifications	CE, FCC, Safety Compliance, Patent Certificates
Interfaces	
USB	<ul style="list-style-type: none"> o USB Expansion × 4 o USB 3.0 × 1
Audio	Supports 3.5 mm audio output interface
RJ45	× 1
Motherboard	RK3568

*Specifications are subject to change without notice.